

T007 Live Oak County Texas , 526 acres (m/l) minerals for lease.

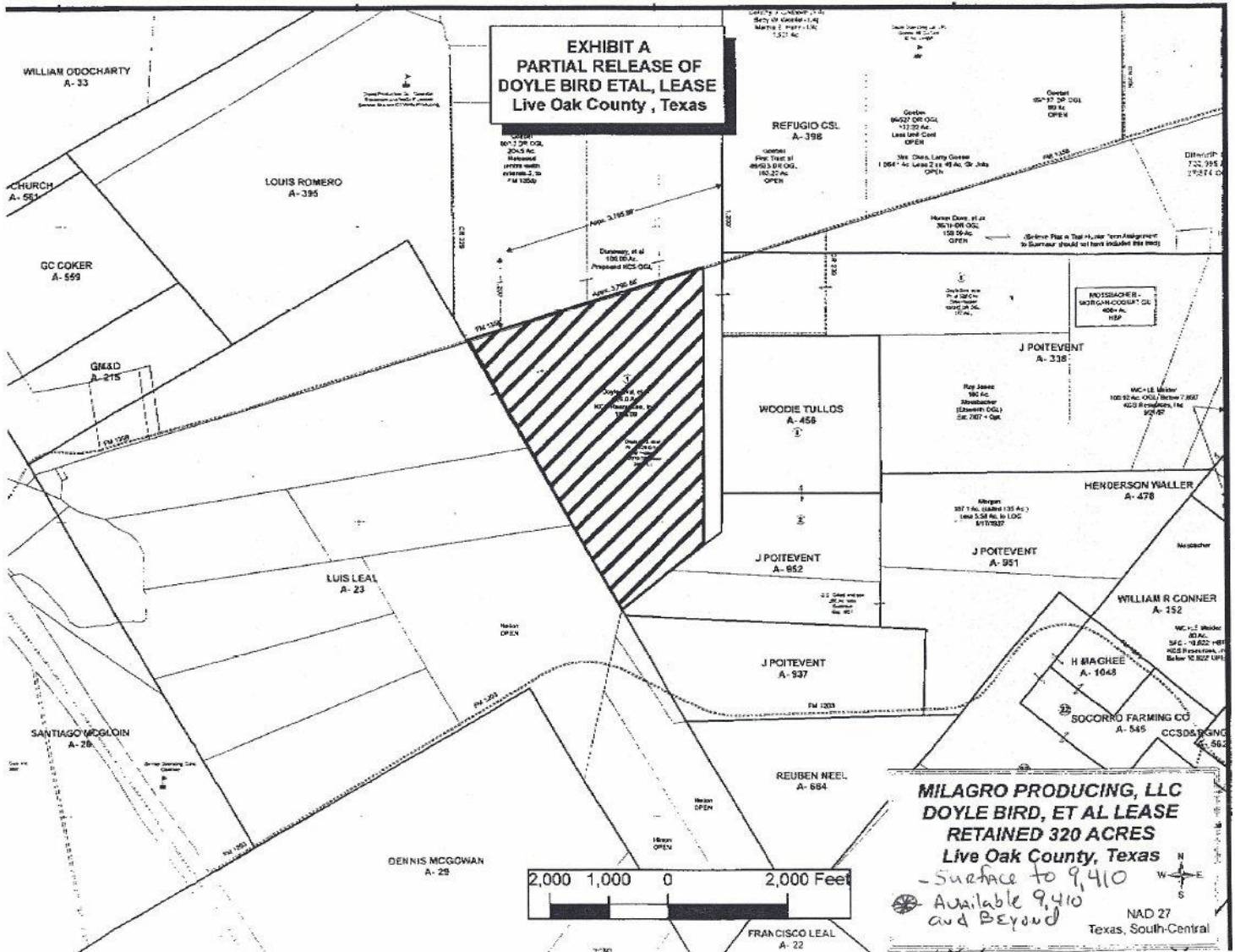
Live Oak County Texas, Eagleford Shale 526 acres (m/l) with 100% mineral interest J Poitevent Survey Abstract 338 and Louis Romero Survey Abstract 395.

Note: 206 acres available surface and all depths lying below with 100% mineral interest

Note: Remaining 326 acres has a current lease from surface to 9,410' (measured at 9,310 MD on electric log in Doyal Bird #1 well, API 42-29734758). Available for lease 9,410' and all depths lying below,

100% mineral interest.

Note: Lease agreement for the 320 acre portion is available on request.



Oil & Gas Production Data Query

Production Data [FAQs](#) [PDO Help](#)

General Production Query **Specific Lease Query**

Specific Lease Query Results

Query Path: [Search Criteria](#) > District 02, Lease: BIRD

Date Range: Aug 2010 to Aug 2011

Related Links

[O&G Directory](#)
[O&G Proration Schedule](#)
[Offshore County Map](#)

View by: [Production and Total Disposition](#) [Disposition Details](#) [County Production](#)

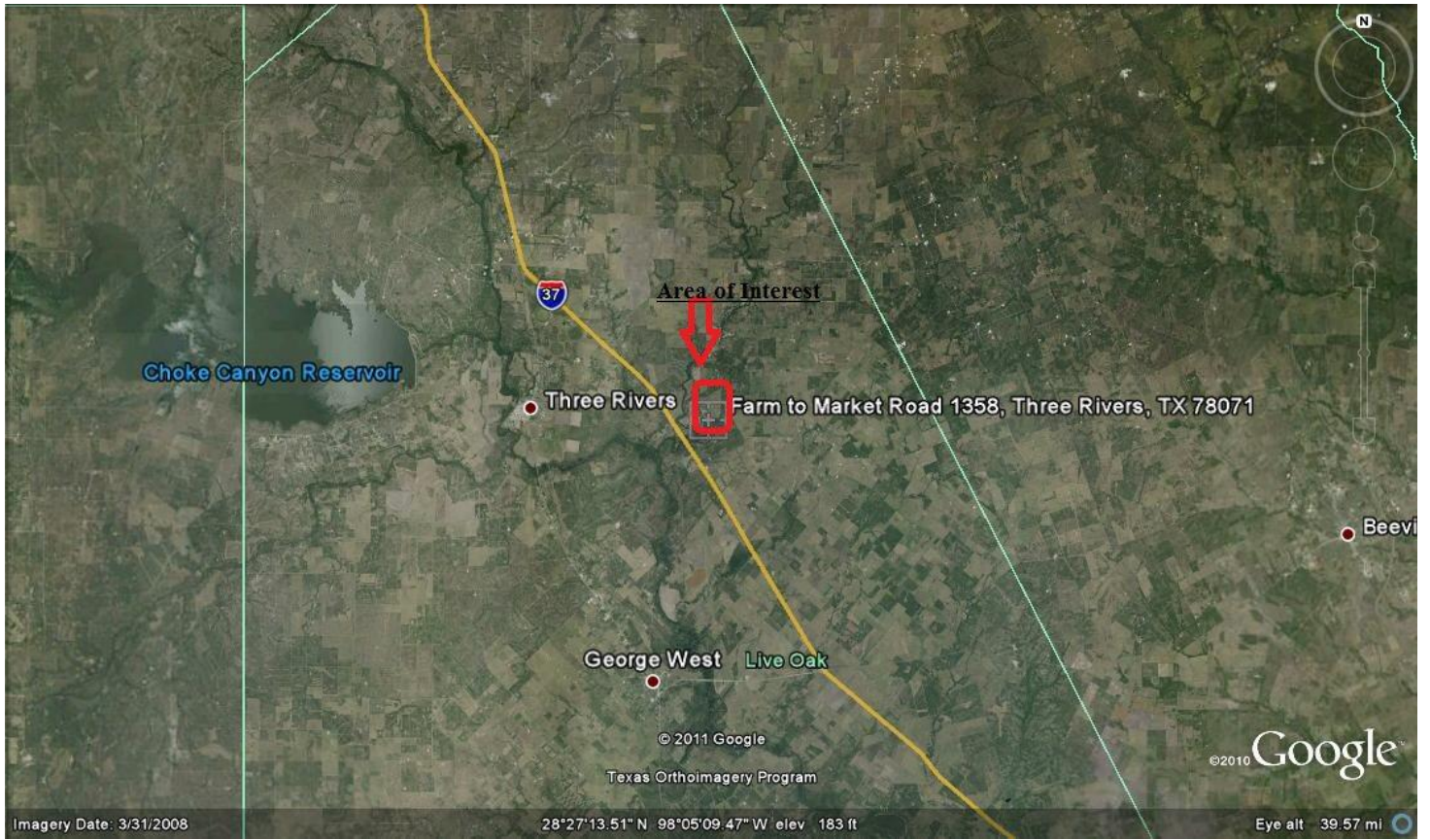
Lease Name: BIRD, Lease No: 235003, Well No: 1

District 02

Lease Production and Disposition

Aug 2010 - Aug 2011

Date	GW Gas (MCF)		Condensate (BBL)		Operator Name	Operator No.	Field Name	Field No.
	Production	Disposition	Production	Disposition				
Aug 2010	2,724	2,724	125	179	MILAGRO EXPLORATION, LLC	566789	OAKVILLE (WILCOX CONS.)	66519740
Sep 2010	2,677	2,677	157	185				
Oct 2010	2,821	2,821	152	187				
Nov 2010	2,550	2,550	129	178				
Dec 2010	2,824	2,824	199	0				
Jan 2011	2,507	2,507	134	360				
Feb 2011	2,329	2,329	154	0				
Mar 2011	2,724	2,724	166	182				
Apr 2011	2,613	2,613	154	181				
May 2011	2,517	2,517	148	182				
Jun 2011	NO RPT	NO RPT	NO RPT	NO RPT				
Jul 2011	NO RPT	NO RPT	NO RPT	NO RPT				
Aug 2011	NO RPT	NO RPT	NO RPT	NO RPT				
Total	26,286	26,286	1,518	1,634				



Choke Canyon Reservoir

37

Area of Interest

Three Rivers

Farm to Market Road 1358, Three Rivers, TX 78071

Beevi

George West Live Oak

© 2011 Google

Texas Orthoimagery Program

©2010 Google

Imagery Date: 3/31/2008

28°27'13.51" N 98°05'09.47" W elev 183 ft

Eye alt 39.57 mi